



ELITE HOMES

PHASE II





### ABOUT SHRACHI GROUP

SHRACHI GROUP HAS BEEN ONE OF THE LEADING REAL ESTATE DEVELOPERS IN EASTERN INDIA. OVER TWO DECADES, THE GROUP HAS BUILT AN IMPECCABLE REPUTATION WITH THEIR RESIDENTIAL & COMMERCIAL REAL ESTATE PROJECTS. SOME OF THEIR LANDMARK PROJECTS ARE URBANA, SOUTH CITY APARTMENTS & MALL, SYNTHESIS BUSINESS PARK, HOME TOWN, GREENWOOD SONATA, ROSEDALE, GREENWOOD NOOK, JUNCTION MALL (DURGAPUR) AND MANY MORE.

### ARCHITECT'S PROFILE

SUBIR BASU, THE FOUNDER OF CONSULTING ARCHITECTS & ENGINEERS IS AN INDIAN ARCHITECT, URBAN DESIGNER AND ACADEMICIAN. HE IS THE ELECTED MEMBER REPRESENTING THE EASTERN REGION OF INDIA IN THE COUNCIL OF ARCHITECTURE (COA), GOVERNMENT OF INDIA. DURING HIS CAREER SPANNING OVER 3 DECADES, SUBIR KUMAR BASU HAS BEEN INVOLVED WITH ARCHITECTURAL DESIGN IN INDIA & ABROAD AND EXECUTION OF MANY HIGH PROFILE HOUSING AND RESIDENTIAL PROJECTS, HOSPITALS, HOTELS, COMMERCIAL PROJECTS LIKE OFFICE BUILDINGS, INDUSTRIAL PROJECTS ETC. HE IS SPECIALIZED IN THE SECTOR OF LARGE HOUSING COMPLEX AND TOWNSHIP PROJECTS. SUBIR KUMAR BASU IS THE ARCHITECT OF VARIOUS PROJECTS OF GOVERNMENT, SEMI-GOVERNMENT, JOINT SECTOR COMPANIES SUCH AS METRO RAILWAY, EAST WEST METRO RAILWAY, MACKINTOSH BURN LTD., BENGAL GREENFIELD HOUSING DEVELOPMENT COMPANY LTD. ETC.



## ELITE HOMES

### PHASE II

LIVE LIFE AT RENAISSANCE TOWNSHIP ELITE HOMES.  
WHERE THE 3-SIDE OPEN APARTMENTS MAKE LIFE THRICE AS PREMIUM.  
WHERE YOUR JOY IS NOT CONFINED WITHIN THE FOUR WALLS.  
AND WHERE HAPPINESS IS NOT LIMITED BY SPACE.  
COME EXPERIENCE LIMITLESS LIVING.  
COME EXPERIENCE LIMITLESS LUXURY.





**OTHER PROJECTS IN  
RENAISSANCE TOWNSHIP**



MAGNOLIA



SOLIS



THE STRAND



SMART HOMES



WELCOME TO AN INTEGRATED TOWNSHIP WHERE AMENITIES AND GREENERY LIVE IN PERFECT HARMONY, A PLACE WHERE DREAMS TAKE SHAPE AND WISHES ARE LIVED. SPREAD OVER TOWNSHIP A SPRAWLING 224-ACRE, THIS IS A PLACE WHERE YOU DON'T LIVE, IT IS A PLACE WHERE YOU COME ALIVE.



ENTRY GATE 2



MARKETING OFFICE ENTRY



GROUP HOUSING GROUND



ENTRY GATE



NARAYANA SCHOOL



SHEMFORD FUTURISTIC SCHOOL



BIMS HOSPITAL



BRIDDHI SHOPPING COMPLEX



**ELITE HOMES**  
PHASE II

**LOCATION  
MAP**

**CONNECTIVITY**

90 MINS FROM KOLKATA  
75 MINS FROM ANDAL AIRPORT  
45 MINS FROM DURGAPUR  
7 MINS FROM BURDWAN RAILWAY STATION  
1 MIN FROM UTTARA BUS STAND

**LIVE AMENITIES WITHIN THE TOWNSHIP**

BIMS HOSPITAL  
NARAYANA SCHOOL  
SHEMFORD FUTURISTIC SCHOOL  
BRIDDDHI SHOPPING COMPLEX  
CLUB SINCLAIR



**Renaissance**  
Township  
नदून वर्धमान



**LEGEND**

- |                           |                                 |                                       |                                   |                           |
|---------------------------|---------------------------------|---------------------------------------|-----------------------------------|---------------------------|
| 1. ENTRY / EXIT -1,2, & 5 | 7. FUTURE DEVELOPING AREA       | 13. SMART HOME (GROUP HOUSING)        | 19. NARAYANA SCHOOL               | 25. UPCOMING SAPPHIRE BAY |
| 2. INTERNAL DRIVEWAY      | 8. PRESENT DEVELOPING AREA      | 14. SOLUS (GROUP HOUSING)             | 20. BIMS HOSPITAL                 | 26. UPCOMING STRAND 2     |
| 3. SOLD OUT PLOTS         | 9. THE STRAND                   | 15. NAKSHATRA HEIGHTS (GROUP HOUSING) | 21. BRIDDDHI (COMMERCIAL COMPLEX) | 27. RENAISSANCE SQUARE    |
| 4. SINCLAIRS CLUB         | 10. "NEEP" TWIN HOUSES          | 16. 33 KV SUB - STATION               | 22. SITE AND SALES OFFICE         | 28. PROPOSED BANQUETS     |
| 5. COMMERCIAL AREA        | 11. PLAYING GROUND              | 17. NAKSHATRA (GROUP HOUSING)         | 23. MACNOLIA                      |                           |
| 6. SOCIAL INFRASTRUCTURE  | 12. ELITE HOMES (GROUP HOUSING) | 18. SHEMFORD SCHOOL                   | 24. UPCOMING MAGNOLIA POOL VILLA  |                           |

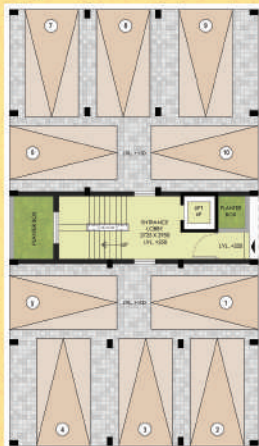
**DEVELOPER**

**SHRACHI BURDWAN  
DEVELOPERS PVT. LTD.**

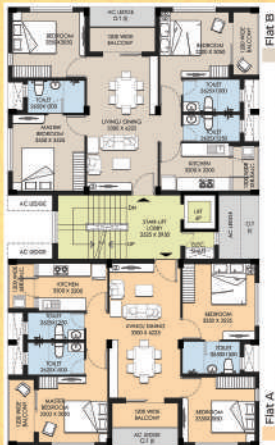
**MASTER PLAN**



**GROUND FLOOR PLAN**



**TYPICAL FLOOR PLAN**  
(1ST TO 4TH FLOOR)



**SUPER BUILTUP AREA**

FLAT TYPE	NO. OF FLAT/FLOOR	TOWER NO.	SBUA (sqft)	BUA (sqft)	CARPET AREA as per RERA (sqft)	BALCONY AREA (sqft)	TOTAL NO. OF FLATS	
3 BHK	A,B	2	2	1353	1023	805	103	16







**ELITE HOMES**  
PHASE II

LIVE LIFE WHERE THE SUNRAYS ARE ENDLESS.  
LIVE LIFE WHERE THE GREENS ARE APLENTY.  
LIVE LIFE WHERE AIR IS IN ABUNDANCE.



**ELITE HOMES**  
PHASE II

**PROJECT  
SPECIFICATION**

**Structure**

RCC framed structure

**Bedrooms**

Floor - Vitrified tiles

Walls - POP

**Living/Dining**

Floor - Vitrified tiles

Walls - POP

**Kitchen**

Floor - Joint-free anti-skid ceramic tiles

Walls - Ceramic tiles up to 2 ft above counter

Counter - Granite

Sink - Stainless steel

**Balcony**

Floor - Joint-free anti-skid ceramic tiles

**Toilet**

Floor - Joint-free anti-skid ceramic tiles

Walls - Ceramic tiles up to full height

Door - PVC door

WC - EWC with concealed cistern

Wash Basin - Porcelain with half pedestal

Geyser - Provision in all toilets

**Door**

Internal - Flush door

Main - Laminated flush door

**Window**

Aluminium powder coated

**External Finish**

Weather coat paint over plaster

**Electrical**

Switches - Modular switches of reputed make

MCB - MCB of reputed make

Wiring - Concealed copper wiring

Telephone points - Living room and master bedroom

TV points - Provision in living room and master bedroom

Electrical points - Adequate light and fan points

AC - Living, dining room and all the bedrooms

**DG Back up**

Available

**Common Areas**

Staircase - Anti-skid tiles/kota

Lift lobby - Vitrified tiles

Lift - From reputed makers

**Security System**

CCTV - CCTV cameras at complex entry







**CORPORATE OFFICE:**

SHRACHI TOWER, 8TH FLOOR, 686 ANANDAPUR, EM BYPASS,  
R B CONNECTOR JUNCTION, KOLKATA - 700 107

**SITE ADDRESS:**

RENAISSANCE TOWNSHIP, NATIONAL HIGHWAY 2, WEST BENGAL 713102

 **99038 29000**     **sales@shrachi.com**     **www shrachirealty.com**

**RERA REGISTRATION NO. - WBRERA/P/PUR/2024/001061**

Disclaimer : Our projects are in alignment with RERA compliance.  
We are empowered to change the plans and specifications subject to RERA law.